



## 61 Hythe Road

Ashford, TN24 8PG

Price £285,000

A most pleasantly appointed terraced home just a short walk from Ashford town centre and mainline station.

Very well presented, this lovely home comprises an entrance hall, sitting room, dining room, kitchen, utility, cloakroom, two bedrooms and spacious four piece bathroom suite. The rear garden is pleasantly enclosed leading on to a private parking area for two cars with further benefits of gas central heating and double glazing. Local schools, shops and transport links are all on the doorstep.

- ATTRACTIVE TERRACED HOUSE
- TWO BEDROOMS
- ENCLOSED REAR GARDEN
- PARKING TO REAR FOR TWO CARS
- GAS CENTRAL HEATING
- DOUBLE GLAZING
- SHORT WALK FROM TOWN CENTRE & MAINLINE STATION
- TWO RECEPTION ROOMS
- GROUND FLOOR CLOAKROOM

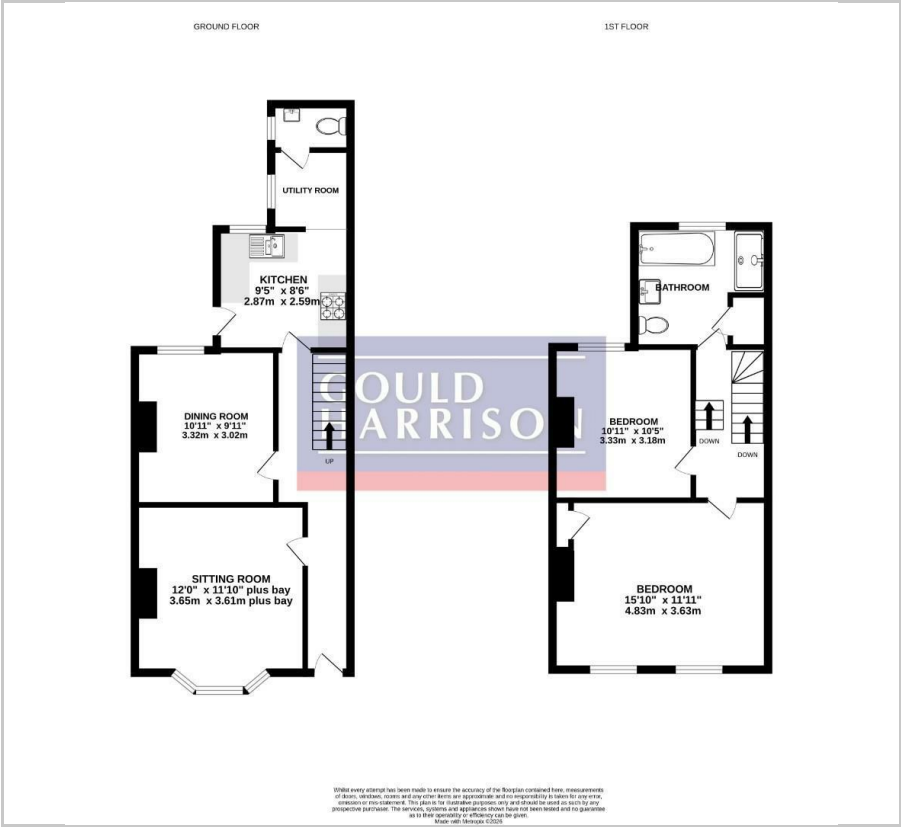
### Viewing

Please contact our Ashford Office on 01233 646411 if you wish to arrange a viewing appointment for this property or require further information.





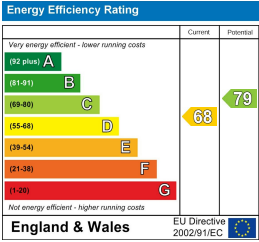
Floor Plan



Area Map



Energy Efficiency Graph



These particulars, whilst believed to be accurate are set out as a general outline only for guidance and do not constitute any part of an offer or contract. Intending purchasers should not rely on them as statements of representation of fact, but must satisfy themselves by inspection or otherwise as to their accuracy. No person in this firm's employment has the authority to make or give any representation or warranty in respect of the property.